

# ACCESSORIES

JANUARY 2025



PEUGEOT  
MOTORCYCLES





# CONTENTS

**KISBEE By Peugeot Motocycles**

KISBEE S.....*Pages 4 à 5*  
KISBEE SE.....*Pages 6 à 8*  
KISBEE S Naked.....*Page 9*  
KISBEE SE Naked.....*Pages 10 à 11*  
KISBEE M.....*Pages 12 à 13*

**DJANGO By Peugeot Motocycles**

DJANGO CLASSIC.....*Pages 15 à 18*  
DJANGO EVO.....*Page 19 à 20*

**PEUGEOT MOTOCYCLES**

e-LUDIX.....*Page 21*  
SPEEDFIGHT.....*Page 22 à 23*  
PEUGEOT TWEET FACELIFT.....*Pages 24 à 25*  
PULSION.....*Pages 26 à 28*  
PM-01/03.....*Page 29*  
XP400.....*Pages 30 à 31*  
PEUGEOT METROPOLIS.....*Pages 32 à 34*  
PEUGEOT METROPOLIS 12" ET 13" .....*Pages 35 à 36*  
COLORS.....*PAGE 37*





**KISBEE**  
KEEP IT SIMPLE.



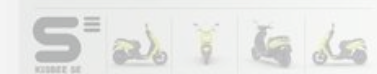
BY PEUGEOT  
MOTORCYCLES

KEEP IT SIMPLE.  
**KISBEE**

BY  **PEUGEOT**  
MOTORCYCLES

KEEP IT SIMPLE.

**KISBEE**



**KISBEE**

BY PEUGEOT



**KISBEE**  
KEEP IT SIMPLE.



BY PEUGEOT  
MOTORCYCLES

**KISBEE**

BY PEUGEOT

# KISBEE S



1



2



3



4



5



1. Support top case - A07005
2. Top case 30L + platine - A05623
3. Pilot apron - A02080
4. Pair of winter sleeves - A08106
5. Support smartphone - A06940



# KISBEE S



6

6. Plancher aluminium - A07300



7

7. Front storage compartment - A02077



8

8. Side stand - A07004 *Availability March 2025, for information purposes only*



9

9. Anti-theft - A07026



10

10. Pneumatic repair kit - A02084



11

11. Windshield - A07003



12



13

12. Jump wind - 779166

13. Complete pad kit - A07020



14

14. Front pads: Left - 785164N / Right - 785165N



15

15. Rear side pads: Left - 785168N / Right - 785167N



16

16. Front side lower pads: Left - 785172N / Right - 785171N



17

17. Top case locking system 33L - A02163





**KISBEE S<sup>≡</sup>**

## 1. COMPLETE KIT TOP CASE 33L - A03120XX

Components included in the kit *						
Complete kit	Support top case	Top case 33L + Platine	Top case backrest 33L	Cover	Colors	
A03120NK	A07005	A02158	A02160	A02161NK	Pearly black	

\* **Screw kit included**



Support top case - A07005



Top case 33L - A02158



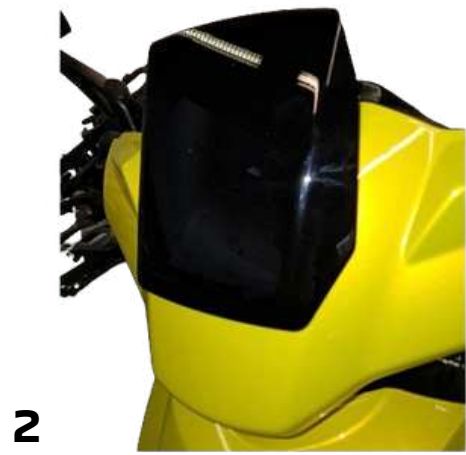
Top case backrest - A02160



Cover - A02161XX



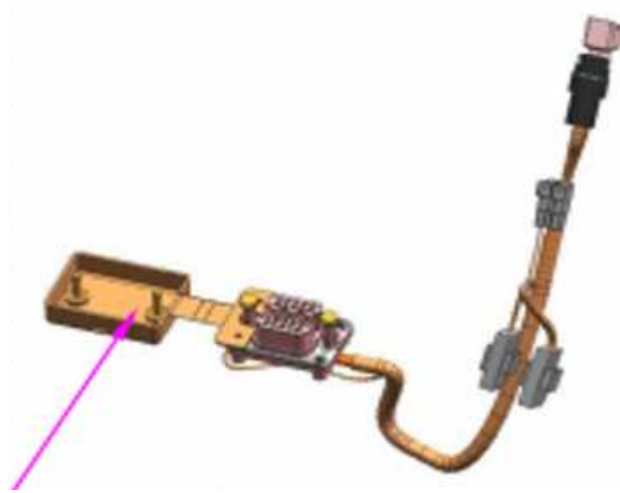
# KISBEE S<sup>III</sup>



2



3



4



5

- 2. Windshield - A03109 *Availability March 2025*
- 3. High windshield - A02196
- 4. On-board charging socket - 401984
- 5. Side stand - A03110 *Availability February 2025*



6



7



8



9

- 6. Pilot apron - A02080
- 7. Support top case - A07005
- 8. Top case 30L + platine - A05623
- 9. Pair of winter sleeves - A08106
- 10. Front storage compartment - A02077
- 11. Support smartphone - A06940



10



11



# KISBEE S<sup>≡</sup>

## 13. ANNEX BATTERY KIT - 1140260400

### Components included in the kit

Additional battery kit	Battery	2 rubber stamps
1140260400	1140132200	401386

14



15/16



14. Battery 1.6KWH - 1140132200

15. Additional battery charger 300 W - 401978

16. Additional battery charger 600 W - 401981





# KISBEE'S NAKED

1



2



3



4



5



6



7



8



9



10



1. Support top case - A07005
2. Top case 30L + platine - A05623
3. Side stand - A07023
4. Battery charger - 804820
5. Pilot apron - A02080
6. Pneumatic repair kit - A02084
7. Top case locking system 33L - A02163
8. Pair of winter sleeves - A08106
9. Support smartphone A06940
10. Front storage compartment - A02077



# KISBEE S<sup>III</sup> NAKED



## 1. ANNEX BATTERY KIT - 1140260400

Components included in the kit		
Additional battery kit	Battery	2 rubber stamps
1140260400	1140132200	401386



2. Battery 1.6KWH - 1140132200

3. Additional battery charger 300 W - 401978

4. Additional battery charger 600 W - 401981







# KISBEE S<sup>3</sup> NAKED



5



6



7



8



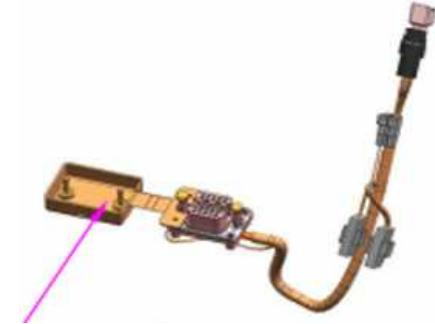
9



10



11



12



13



14

5. Support top case - A07005

6. Top case 30L + platine - A05623

7. Pilot apron - A02080

8. Pneumatic repair kit - A02084

9. 33L top case locking system - A02163

10. Side stand - A03110 *Availability March 2025, for information purposes only*

11. Pair of winter sleeves - A08106

12. On-board charging socket - 401984

13. Support smartphone - A06940

14. Front storage compartment - A02077



# KISBEE M



## 1. COMPLETE KIT TOP CASE 39L - A08121XX

Components included in the kit *				
Complete kit	Top case 39L + Platine	Top case backrest 39L	Cover	Colors
A02185M7	A08320	A08103N	A08102M7	Jet Black
A02185K7	A08320	A08103N	A08102K7	Antarctica White

\* Screw kit included



Top case 39L - A08320



Cover - A08102XX



Top case backrest - A08103N



# KISBEE M



2



3



4



5



6



7



8



9



10

- 2. Lined sleeves - A08106
- 3. Pilot apron - A02080
- 4. Anti-theft - A07026
- 5. Windshield - A06928

- 6. Support top case noir - 802002N
- 7. Silver top case support - 802002AL
- 8. Battery charger - 804820
- 9. Pneumatic repair kit - A02084
- 10. Support smartphone - A06940



**DJANGO**

BY PEUGEOT





# DJANGO

## CLASSIC



### 1. COMPLETE KIT TOP CASE SHAD 33L - A02187XX

Components included in the kit \*

Complete kit	Rear luggage rack	Top case 33L	Top case backrest	Cover	Handlebar ends	Colors
<b>A02187S5</b>	A09003XK	A02158		A02161S5	A09039	Deep Ocean Blue
<b>A02187H6</b>	A09003XK	A02158	A02160	A02161H6	A09039	Mad Black
<b>A02187V6</b>	A09003XK	A02158	A02160	A02161V6	A09039	Racing Green
<b>A02187P7</b>	A09003XK	A02158	A02160	A02161P7	A09039	Milky White
<b>A02187G9</b>	A09003XK	A02158	A02160	A02161G9	A09039	Dragon Red
<b>A02187V9</b>	A09003N	A02158	A02160	A02161V9	A09039	Adventure Green
<b>A02187F4</b>	A09003XK	A02158	A02160	A02161F4	A09039	Polar White
<b>A02187X8</b>	A09003XK	A02158	A02160	A02161X8	A09039	Flamingo Red
<b>A02187X6</b>	A09003XK	A02158	A02160	A02161X6	A09039	Paradise Blue
<b>A02187P9</b>	A09003XK	A02158	A02160	A02161P9	A09039	Pistachio
<b>A02187T6</b>	A09003XK	A02158	A02160	A02161T6	A09039	Caribbean Yellow
<b>A02187F8</b>	A09003XK	A02158	A02160	A02161F8	A09039	Icy white

\* Screw kit included



Top case 33L - A02158



Top case backrest - A02160



Cover - A02161XX



Chrome Rear Luggage Rack -  
A09003XK



Black rear luggage rack -  
A09003N



Handlebar end cap -  
A09039





# DJANGO

## CLASSIC

## 2. COMPLETE KIT TOP CASE GIVI 34L - A09035XX

Still available

Components included in the kit *					
Complete kit	Rear luggage rack	Top case 34L	Top case backrest	Handlebar ends	Colors
<b>A09035S5</b>	A09003XK	785819S5	803457N	A09039	Deep Ocean Blue
<b>A09035P7 A09037P7</b>	A09003XK	785819P7	803457N 803457M	A09039	Milky White
<b>A09035Q2 A09037Q2</b>	A09003XK	785819Q2	803457N 803457M	A09039	Satin flash silver
<b>A09035I2 A09037</b>	A09003XK	785819F4	803457N 803457M	A09039	Mad grey
<b>A09035R1 A09037R1</b>	A09003XK	785819R1	803457N 803457M	A09039	Ink black

\* Screw kit included



Chrome Rear Luggage Rack - A09003XK



Top case 34L - 785819XX



Black leather top case backslash - 803457N  
Brown leather top case backslash - 803457M



Handlebar end cap - A09039



# DJANGO

CLASSIC



- 3. Pilot apron - A09099
- 4. Protective cover - A09011
- 5. Black leather top case backrest - 803457N
- 6. Black passenger backrest - A09006N

- 7. Bronze passenger backrest - A09006T8
- 8. Pair of winter sleeves - A08106
- 9. Front luggage rack - A09004XK
- 10. Floor mats - 786904R1





# DJANGO

## CLASSIC

### 11. Rearview mirrors



Pair of Allure mirrors - A09022

Left: 787327N Right: 787328N



Pair of Sport & Evasion mirrors - A09023

Left: 787327R2 Right: 787328R2



Pair of black round mirrors - A09026

Left: 787101N Right: 787100N



Pair of Heritage mirrors - A09024

Left: 787101XK Right: 787100XK



12



13



14



15



16



17

- 12. Short windshield - 786503
- 13. High windshield - A09007
- 14. Top case locking system 33L - A02163
- 15. Support smartphone - A09038
- 16. U-lock - A09020
- 17. Pneumatic repair kit - A02084



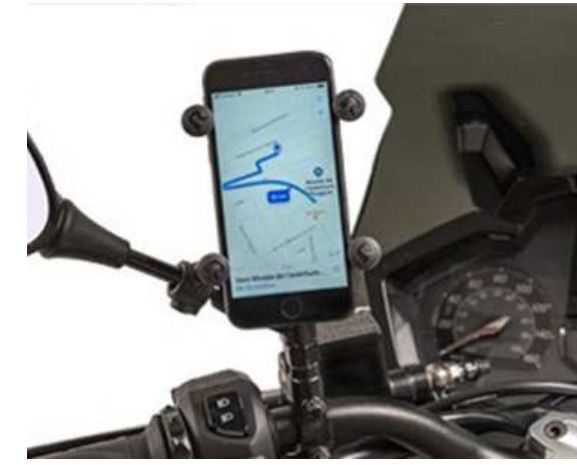
# DJANGO EVO



3



4



5



6



7



8



9



10



3. Pilot apron - A08325

4. Support smartphone - A06940

5. Pneumatic repair kit - A02084

6. Top case locking system 33L - A02163

7. Pair of winter sleeves - A08106

8. Windscreen kit for Django Evo Active - A03109

9. Pare brise court - A03116 (Pas encore disponibilité)

10. Pare brise haut - A03117 (Pas encore disponibilité)



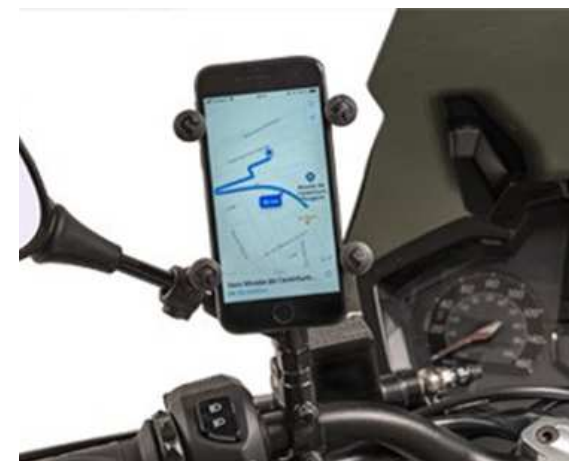
# DJANGO EVO



3



4



5



6



7



8



9



10



3. Pilot apron - A08325

4. Support smartphone - A06940

5. Pneumatic repair kit - A02084

6. Top case locking system 33L - A02163

7. Paio di maniche invernali - A08106

8. Kit parabrezza per Django Evo Active - A03109

9. Parabrezza corto - A03116 (Non ancora disponibile)

10. Parabrezza alto - A03117 (Non ancora disponibile)



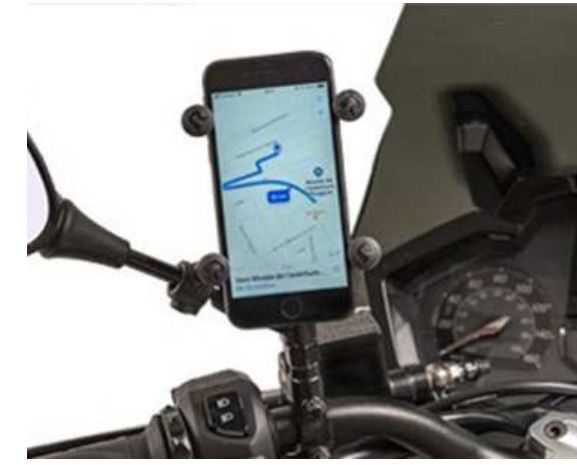
# DJANGO EVO



3



4



5



6



7



8



9



10



3. Pilot apron - A08325

4. Support smartphone - A06940

5. Pneumatic repair kit - A02084

6. Top case locking system 33L - A02163

7. Pair of winter sleeves - A08106

8. Windshield Kit for Django Evo Active - A03109

9. Short Windshield - A03116 (Not yet available)

10. High Windshield - A03117 (Not yet available)





**PEUGEOT**  
MOTORCYCLES



# E-LUDIX



1



2



3



4



5



- 1. Luggage rack - A05728
- 2. Top case 30L + platine - A05623
- 3. Empty pocket set - A05708
- 4. Support smartphone - A06940
- 5. Pilot apron - A09101

6



7



8



- 6. Extra battery - 1179785700
- 7. Additional battery charger - 804706
- 8. Pneumatic repair kit - A02084



# SPEEDFIGHT



1



2



3



4



5



1. Luggage rack - A06100
2. Top case 30L + platine - A05623
3. White saddle shell - A06114F8
4. Black saddle shell - A06114NK
5. Stainless steel floor - A06111



# SPEEDFIGHT



- 6. Low windshield - A06101
- 7. High windshield - A06102
- 8. Side stand - A06103
- 9. Rear shock absorber - 773417N
- 10. Pair of winter sleeves - A08106

- 11. Support smartphone - A06115
- 12. Battery charger - 804820
- 13. Pneumatic repair kit - A02084
- 14. Top case locking system 33L - A02163



PEUGEOT

# TWEET

FACELIFT



## 1. COMPLETE KIT TOP CASE 39L - A08121XX

Components included in the kit *				
Complete kit	Top case 39L	Top case backrest	Cover	Colors
<b>A08121M7</b>	A08320	A08103N	A08102M7	Jet Black
<b>A08121K7</b>	A08320	A08103N	A08102K7	Antarctica White
<b>A08121W4</b>	A08320	A08103N	A08102W4	Pacific Blue
<b>A08121V3</b>	A08320	A08103N	A08102V3	Graphite Grey

\* Screw kit included



Top case 39L - A08320



Top case backrest - A08103N



Cover - A08102XX

## 2. COMPLETE KIT TOP CASE 33L - A02195XX

Components included in the kit *				
Complete kit	Top case 33L	Top case backrest	Cover	Colors
<b>A02195M7</b>	A02158	A02160	A02161M7	Jet Black
<b>A02195K7</b>	A02158	A02160	A02161K7	Antarctica White
<b>A02195W4</b>	A02158	A02160	A02161W4	Pacific Blue
<b>A02195V3</b>	A02158	A02160	A02161V3	Graphite Grey

\* Screw kit included



Top case 33L - A02158



Top case backrest - A02160



Cover - A02161XX



PEUGEOT  
**TWEET**  
 FACELIFT



3



4



5



6



7



8



9



10 / 11

- 3. Short tinted windshield - 1140232400
- 4. Medium windshield - 1140232300
- 5. High windshield - 1140156000
- 6. Pilot apron - A08324
- 7. Support smartphone - A06940

- 8. Pneumatic repair kit - A02084
- 9. Latch - A08320VE
- 10. Top case barrel 39L - SE8101
- 11. Top case barrel 33L - A02163





# PULSION



## 1. COMPLETE KIT TOP CASE 39L - A08304XX

Components included in the kit *					
Complete kit	Support top case	Platine 39L + top case	Top case backrest	Cover	Colors
<b>A08304NK</b>	11795186M1	A08320	A08103N	1379323568	Pearly Black
<b>A08304U9</b>	11795186M1	A08320	A08103N	13793235U9	Satin Pearly White
<b>A08304V5</b>	11795186M1	A08320	A08103N	13793235V5	Amazonite Satin Blue
<b>A08304W3</b>	11795186M1	A08320	A08103N	13793235W3	Shark Grey

\* *Screw kit included*



Top case 39L - A08320



Cover - 13793235XX



Top case backrest - A08103N



# PULSION



2



3



4



5



6



7



8



9

- 2. Pilot apron - A08305
- 3. Pair of winter sleeves - A08106
- 4. Passenger backrest - A08301N
- 5. RS stainless steel floor - A08313

- 6. Support smartphone - A06940
- 7. Battery charger - 804820
- 8. High windshield - 1279681300
- 9. Active Windshield - A02176



# PULSION



10



11



12



13



14



- 10. SRA anti-theft device - A08308
- 11. SRA+ chain anti-theft device - A08309
- 12. Latch - A08320VE
- 13. Top case barrel 39L - SE8101
- 14. Pneumatic repair kit - A02084

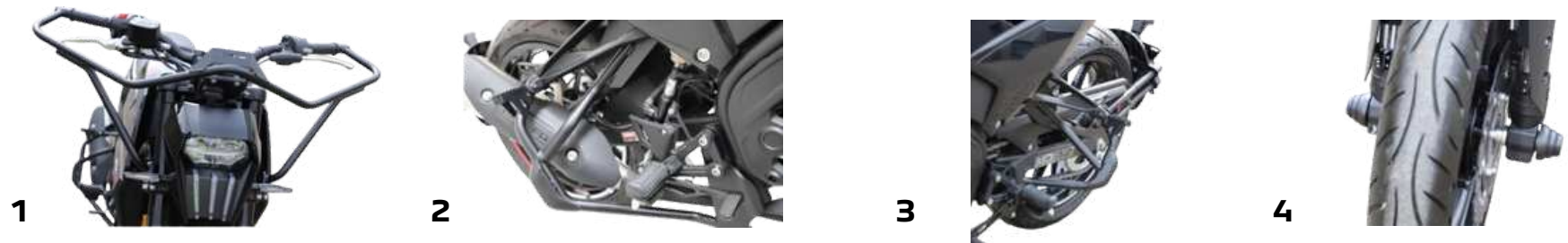




**PM-01**  
**PM-03**

## 1. KIT MOTO ECOLE - A02194

Components included in the kit				
Complete kit	Front face protection	Right side protection	Left side protection	Front wheel and fork protection
<b>A02194</b>	A02190	A02191	A02192	A02193



- 1. Front panel protection - A02190
- 2. Right side protection - A02191
- 3. Left side protection - A02192
- 4. Front wheel and fork protection - A02193



## 2. MOTOR MOUNTING KIT PM01 - A03107

Components included in the kit			
Complete kit	2 hulls in tinted black ASA	1 central steel plate	Screws
<b>A03107</b>			



Support smartphone - A06940



Wind jump - 1140181000



# XP400



## 1. COMPLETE KIT TOP CASE 58L - A02181XX

Components included in the Kit *						
Complete kit	Support top case	Top case 58L	Top case backrest	Top case cover	M6 x 50mm stainless steel screws	Colors
<b>A02181W2</b>	1140215900	A02165	A02168	13A02169W2	807614 x 2	Aurora Satin Green
<b>A02181W3</b>	1140215900	A02165	A02168	13A02169W3	807614 x 2	Shark Grey
<b>A02181V4</b>	1140215900	A02165	A02168	13A02169V4	807614 x 2	Sideral Mat Black
<b>A02181BL</b>	1140215900	A02165	A02168	13A0216938	807614 x 2	Snow White
<b>A02181S2</b>	1140215900	A02165	A02168	13A02169S2	807614 x 2	Satin Technium
<b>A02181PB</b>	1140215900	A02165	A02168	13A02169PB	807614 x 2	Pulsar Blue

\* Screw kit included



Support top case -  
1140215900



Top case 58L - A02165



Top case backrest -  
A02168



Top case cover - 13A02169XX



# XP400

2



3



4



5



6



7



8



9



- 2. Crash bars - 1179811205
- 3. Pilot apron - 1140112800
- 4. RS Tinted Windshield - 1140124100
- 5. Support smartphone - A06940
- 6. 12V 1.5A Battery Charger - 804821
- 7. Pneumatic repair kit - A02084
- 8. 58L top case barrel - A02170
- 9. 58L top case locking system - A02171
- 10. Pair of winter sleeves - A08106
- 11. Passenger backrest - A08301N

10



11





# PEUGEOT METROPOLIS



## 1. COMPLETE KIT TOP CASE 58L - A02183XX

Components included in the kit *					
Complete kit	Support top case	Top case 58L	Top case backrest	Cover	Colors
<b>A02183BL</b>	A08010	A02165	A02168	13A0216938	Snow White
<b>A02183W3</b>	A08010	A02165	A02168	13A02169W3	Shark Grey
<b>A02183K1</b>	A08010	A02165	A02168	13A02169K1	Midnight Blue
<b>A02183V4</b>	A08010	A02165	A02168	13A02169V4	Sideral Mat Black
<b>A02183V8</b>	A08010	A02165	A02168	13A02169V8	Smoky Quartz Satin
<b>A02183V5</b>	A08010	A02165	A02168	13A02169V5	Amazonite Satin Blue
<b>A02183NK</b>	A08010	A02165	A02168	13A0216968	Pearly Black
<b>A02183S2</b>	A08010	A02165	A02168	13A02169S2	Satin Technium

\* *Screw kit included*



Support top case 58L - A08010



Top case 58L - A02165



Top case backrest - A02168



Cover - 13A02169XX



# PEUGEOT METROPOLIS



2

Dimensions L.2198 x h.1261 x l.890 mm



3



4



5



6



7



8



9



10



2. Protective cover - A08003

3. Saddle cover - A08002

4. Metropolis Facelift Pilot Apron - A08079

5. High comfort backrest - 798140

6. RS Windshield - 807264

7. Stainless steel floor assembly - A08009

8. Support smartphone - A08004

9. Pair of winter sleeves - A08106

10. Pot adaptable Arrow - 805019



PEUGEOT  
**METROPOLIS**



11



12



13



14



15

- 11. Battery charger - 804821
- 12. Pneumatic repair kit - A02084
- 13. Double U-lock - A08012
- 14. Top case barrel 58L - A02170
- 15. 58L top case locking system - A02171





# PEUGEOT METROPOLIS

12" AND 13"



Old version

## 1. COMPLETE KIT TOP CASE 58L - A02183XX

Components included in the kit *					
Complete kit	Support top case	Top case 58L + platine	Top case backrest	Cover	Colors
A02183F5	A08010	A02165	A02168	13A02169BF5	Pearly White
A02183I8	A08010	A02165	A02168	13A02169I8	Safron Red
A02183S6	A08010	A02165	A02168	13A02169S6	Metallic Copper
A021831T5	A08010	A02165	A02168	13A02169T5	Emerald Crystal
A02183T9	A08010	A02165	A02168	13A02169T9	Red Ultimate
A02183TV	A08010	A02165	A02168	13A02169TV	Technium Verni
A02183V5	A08010	A02165	A02168	13A02169V5	Amazonite Satin Blue

1. \* **Screw kit included**



Support top case - A08010



Top case 58L - A02165



Top case backrest - A02168



Cover - 13A02169XX



# PEUGEOT METROPOLIS

12" AND 13"



2



3



4



5



6



7



8



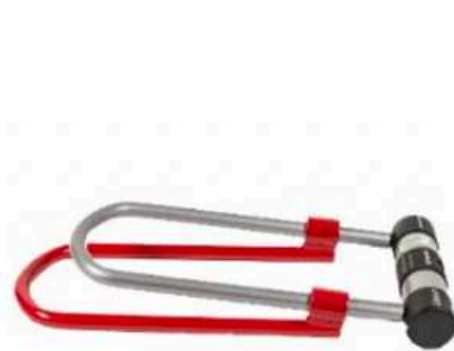
9



10



11



12



13



14

2. Protective cover - A08003

3. Pilot apron - A08075

4. Saddle cover - A08002

5. Passenger backrest - A08070N

6. Pair of winter sleeves - A08106

7. Side deflectors - A08008

8. Support smartphone - A08004

9. Handguard assembly - A08007

10. Windshield - 1179963400

11. Pneumatic repair kit - A02084

12. Anti-theft - A08012


13. Battery charger - 804821

14. Pot adaptable Arrow - 805019



# COLORS

XP	PM01 / PM03	Peugeot TWEET FL	Peugeot TWEET FL PRO	DJANGO EVO			Peugeot METROPOLIS			PULSION				
 Aurora Satin Green W2	 Shark Grey W3	 Storm Black W5	 Graphite Grey V3	 Pacific Blue W4	 Antartica White K7	 Icy White F8	 Polar White F4	 Celest Blue M4	 Mad Grey I2	 Shark Grey W3	 Sideral Mat Black V4	 Safron Red I8	 Shark Grey W3	 Amazonite Satin Blue V5
 Snow White BL	 Sideral Mat black V4	 Jet Blue W7	 Antartica White K7	 Jet Black M7	 Mad Black H6	 Adventure Green V9	 Rocky Blue P5	 Cherry Red F3	 Ink Black R1	 Mystic Green W6	 Smoky Quartz Satin V8	 Red Ultimate T9	 Satin Pearly White U9	 Pearly Black NK
		 Sharp White W8	 Daring red V7	 Onyx Grey Mat I7				 Satin Flash Silver Q2		 Pearly White F5	 Metallic copper S6	 Emerald Crystal T5		

SPEEDFIGHT	KISBEE		DJANGO Classic				STREETZONE		E-STREETZONE		E-LUDIX		KISBEE SE	
 Mad Black H6	 Icy White F8	 Pearly Black NK	 Celest Blue M4	 Dragon Red G9	 Carabean Yellow T6	 Deep Ocean Blue S5	 Mad Black H6	 Mad Black H6	 Cherry Red F3	 Icy White F8	 Innocent White U6	 Yuzu Yellow Y6		
 Adventure Green V9	 Mad Black H6	 Flat 6 Red R6	 Adventure Green V9	 Pistachio P9	 Satin Flash Silver Q2	 Adventure Green V9	 Pearly Black NK	 Bleu France Q1	 Curacao Blue Q1	 Mad Black H6	 Vivid carrot U4	 Mercury Grey Y7		
 Rose Gold R9	 Meteor Grey W9	 Satin Flash Silver Q2	 Icy White F8	 Paradise Blue X6	 Flamingo Red X8						 Serious Black U5	 Sirius White Y8		
											 Shinny Teal U3	 Pearly Black NK		





PEUGEOT  
MOTORCYCLES

Non-contractual photos / In a constant effort to improve, Peugeot Motorcycles reserves the right to modify, delete or add any reference cited.

Photo credits: L'Alternative – Gorgo Project - Jinan Black Fashion Culture Media Co-Little Shao & Bleen Agency – Eric Malherbes – Arth&Math Design Studio

[peugeot-motocycles.fr](https://www.peugeot-motocycles.fr)

January 2025

PEUGEOT MOTORCYCLES RECOMMANDE 

*Dealer stamp*